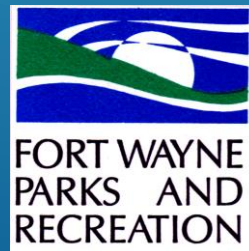
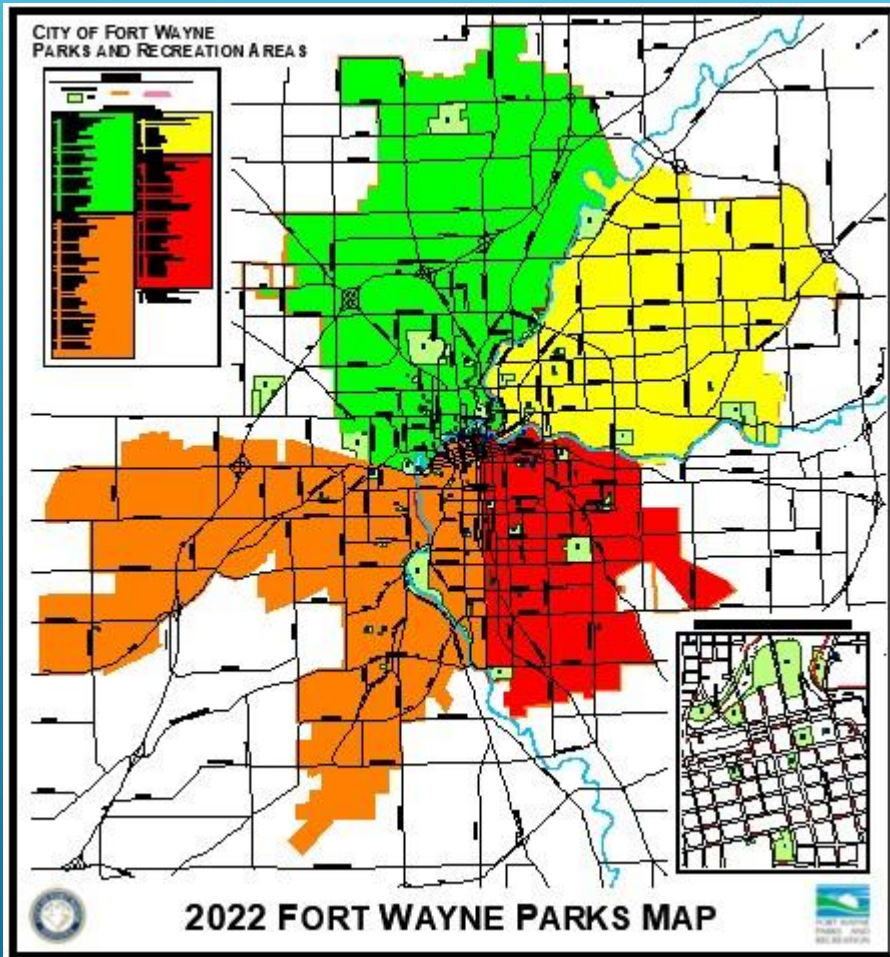


FORT WAYNE BOARD OF PARK COMMISSIONERS

Parks History and Highlights: Southeast Quadrant

- Bowser Park
- Brackenridge Park
- Brewer Park

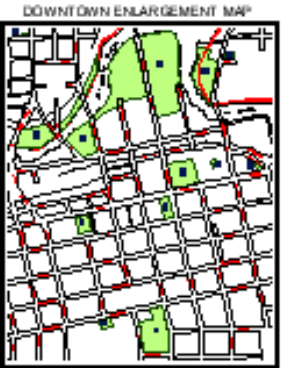
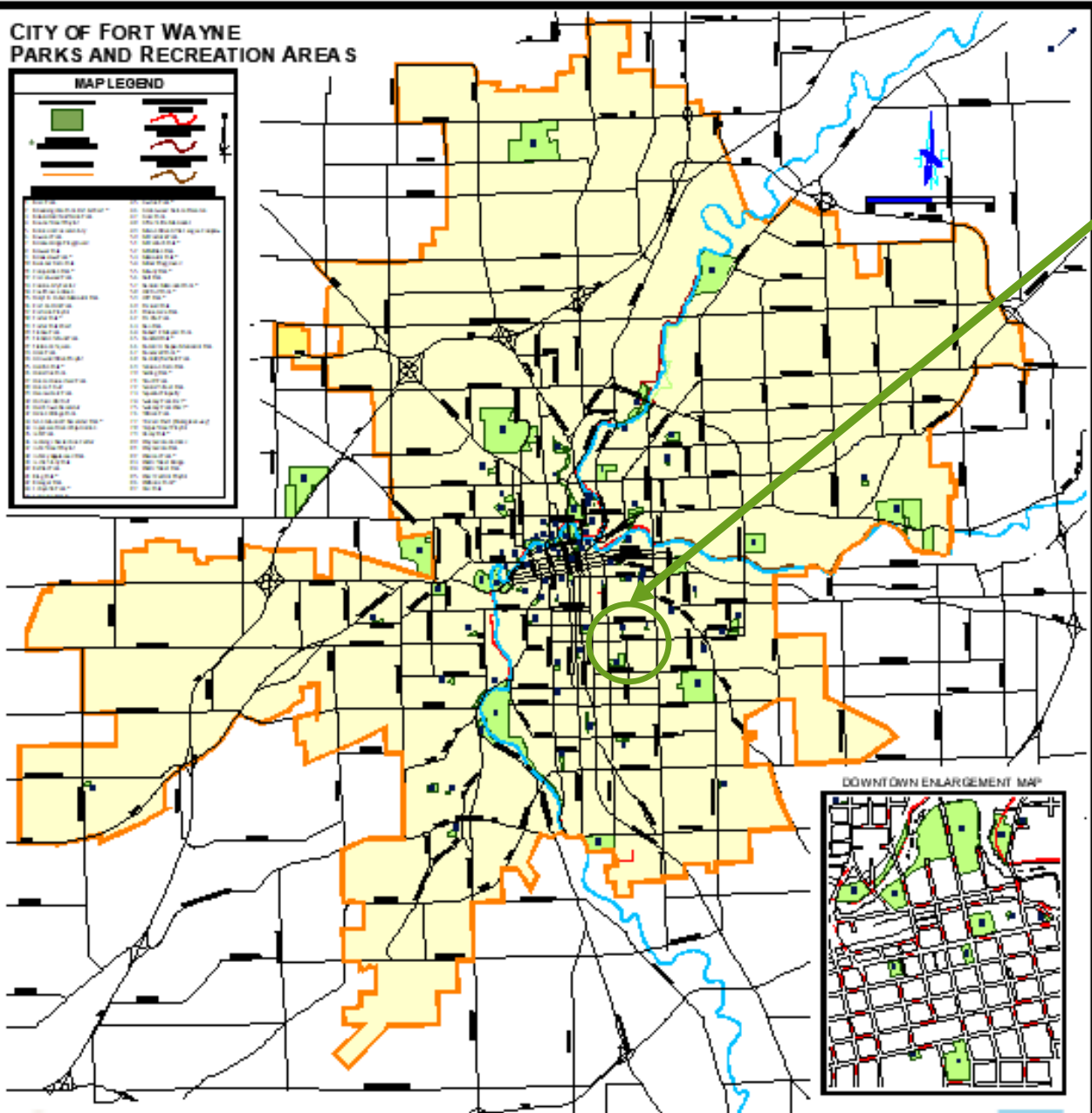


CITY OF FORT WAYNE
PARKS AND RECREATION AREAS

MAP LEGEND

	City of Fort Wayne Parks and Recreation Areas
	City of Fort Wayne Parks and Recreation Areas
	City of Fort Wayne Parks and Recreation Areas
	City of Fort Wayne Parks and Recreation Areas
	City of Fort Wayne Parks and Recreation Areas
	City of Fort Wayne Parks and Recreation Areas

1. Adams Park
2. Adams Park
3. Adams Park
4. Adams Park
5. Adams Park
6. Adams Park
7. Adams Park
8. Adams Park
9. Adams Park
10. Adams Park
11. Adams Park
12. Adams Park
13. Adams Park
14. Adams Park
15. Adams Park
16. Adams Park
17. Adams Park
18. Adams Park
19. Adams Park
20. Adams Park
21. Adams Park
22. Adams Park
23. Adams Park
24. Adams Park
25. Adams Park
26. Adams Park
27. Adams Park
28. Adams Park
29. Adams Park
30. Adams Park
31. Adams Park
32. Adams Park
33. Adams Park
34. Adams Park
35. Adams Park
36. Adams Park
37. Adams Park
38. Adams Park
39. Adams Park
40. Adams Park
41. Adams Park
42. Adams Park
43. Adams Park
44. Adams Park
45. Adams Park
46. Adams Park
47. Adams Park
48. Adams Park
49. Adams Park
50. Adams Park
51. Adams Park
52. Adams Park
53. Adams Park
54. Adams Park
55. Adams Park
56. Adams Park
57. Adams Park
58. Adams Park
59. Adams Park
60. Adams Park
61. Adams Park
62. Adams Park
63. Adams Park
64. Adams Park
65. Adams Park
66. Adams Park
67. Adams Park
68. Adams Park
69. Adams Park
70. Adams Park
71. Adams Park
72. Adams Park
73. Adams Park
74. Adams Park
75. Adams Park
76. Adams Park
77. Adams Park
78. Adams Park
79. Adams Park
80. Adams Park
81. Adams Park
82. Adams Park
83. Adams Park
84. Adams Park
85. Adams Park
86. Adams Park
87. Adams Park
88. Adams Park
89. Adams Park
90. Adams Park
91. Adams Park
92. Adams Park
93. Adams Park
94. Adams Park
95. Adams Park
96. Adams Park
97. Adams Park
98. Adams Park
99. Adams Park
100. Adams Park



BOWSER PARK

1500 Fisher Street



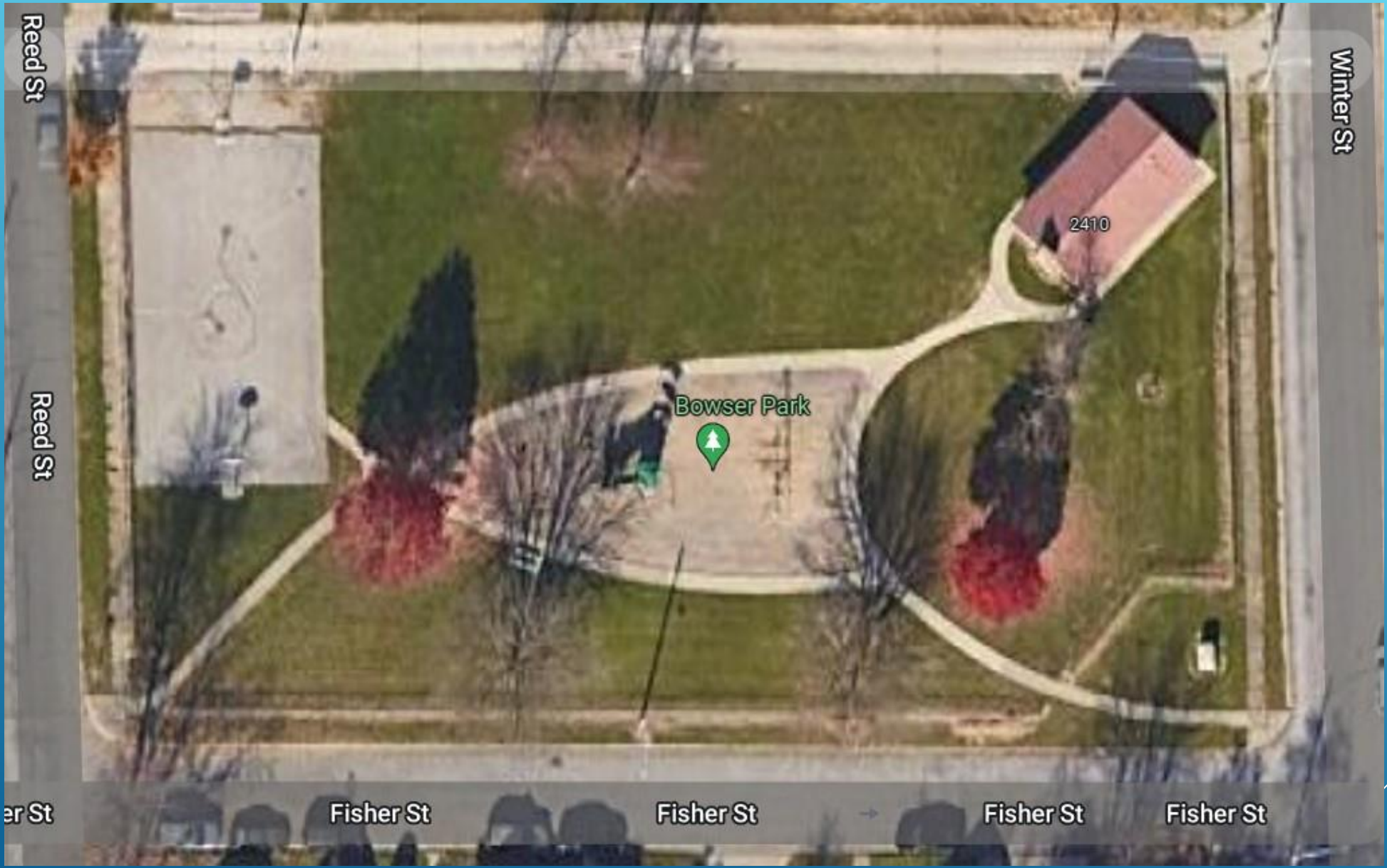
2022 FORT WAYNE PARKS MAP



BOWSER PARK

Since 1923

Size in Acres: 0.92



BOWSER PARK

History: Bowser Park is named after Allen County native, and inventor, Sylvanus F. Bowser. Mr. Bowser was the inventor of a new type of pump that would eventually become the first automobile fuel pump. So successful was his design that he was able to form the S.F. Bowser Company in 1885. In 1923, Bowser, now a successful industrialist, inventor, and philanthropist, along with his wife Sarah, donated nearly an acre of land that had been beautified at their own expense on the condition that it remain a place of relaxation and enjoyment for the city's residents and their children. Today Bowser Park is home to a Childrens Playground, a Basketball Court, and a small pavilion with restroom facilities.





AT THE SOUTHEAST CORNER OF THE PARK STANDS A STONE MONUMENT THAT COMMEMORATES THE DONATION OF THE PARK BY THE BOWSERS.

“GIVEN BY US FOR THE COMFORT AND PLEASURE OF OUR NEIGHBORS AND THEIR CHILDREN FOR ALL TIME TO COME WE ARE TRULY THANKFUL TO GOD THAT WE CAN DO THIS AND THAT WE HAVE THE WILL TO DO IT”

MR. & MRS. S.F. BOWSER
JULY 1922

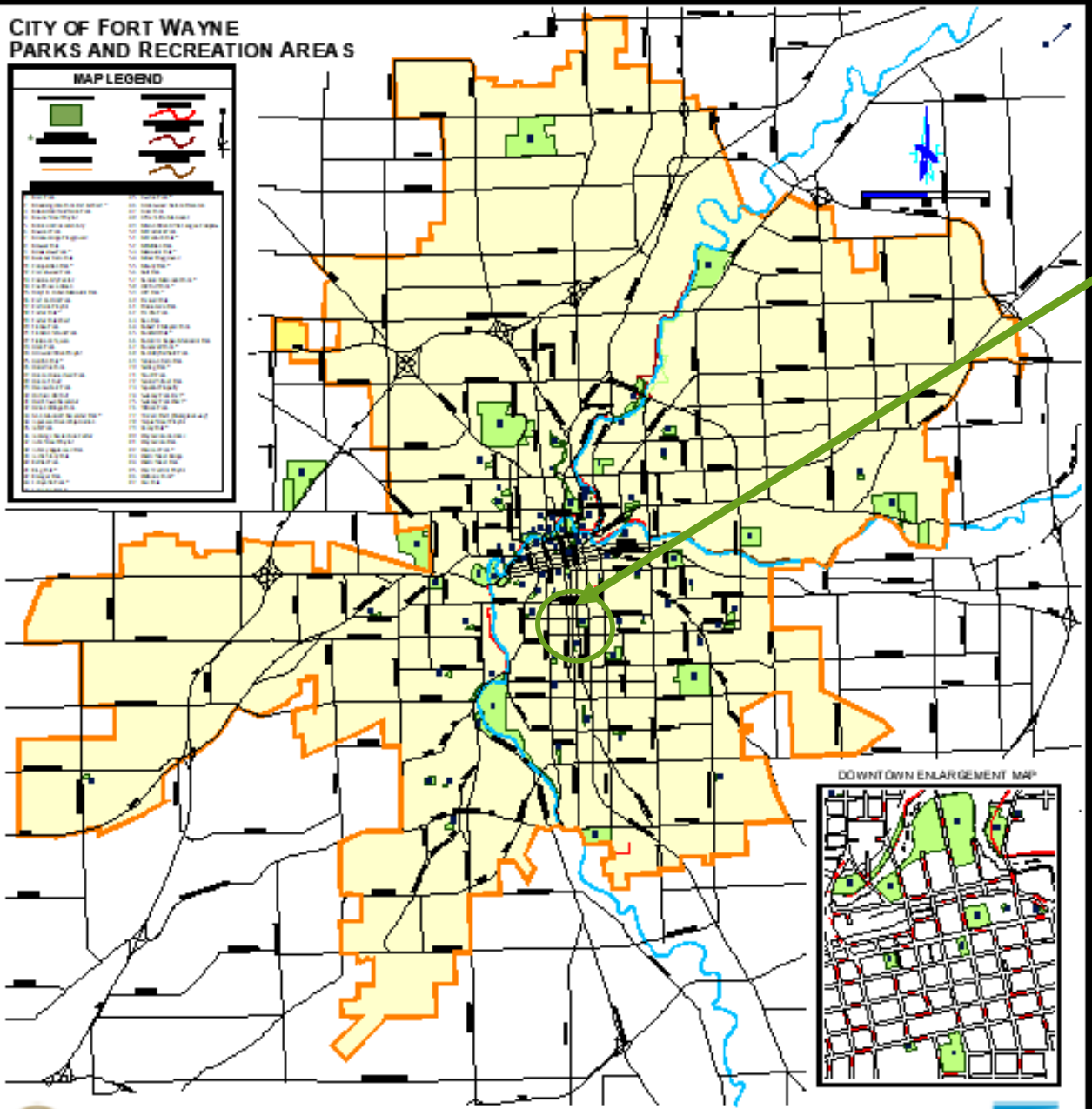
CITY OF FORT WAYNE
PARKS AND RECREATION AREAS

MAP LEGEND



[Green square]	[Red line]
[Black line]	[Blue line]
[Orange outline]	[Black line]

Legend table with 2 columns of symbols and corresponding text labels for various map features.



DOWNTOWN ENLARGEMENT MAP



BRACKENRIDGE PARK

602 E. Brackenridge St.



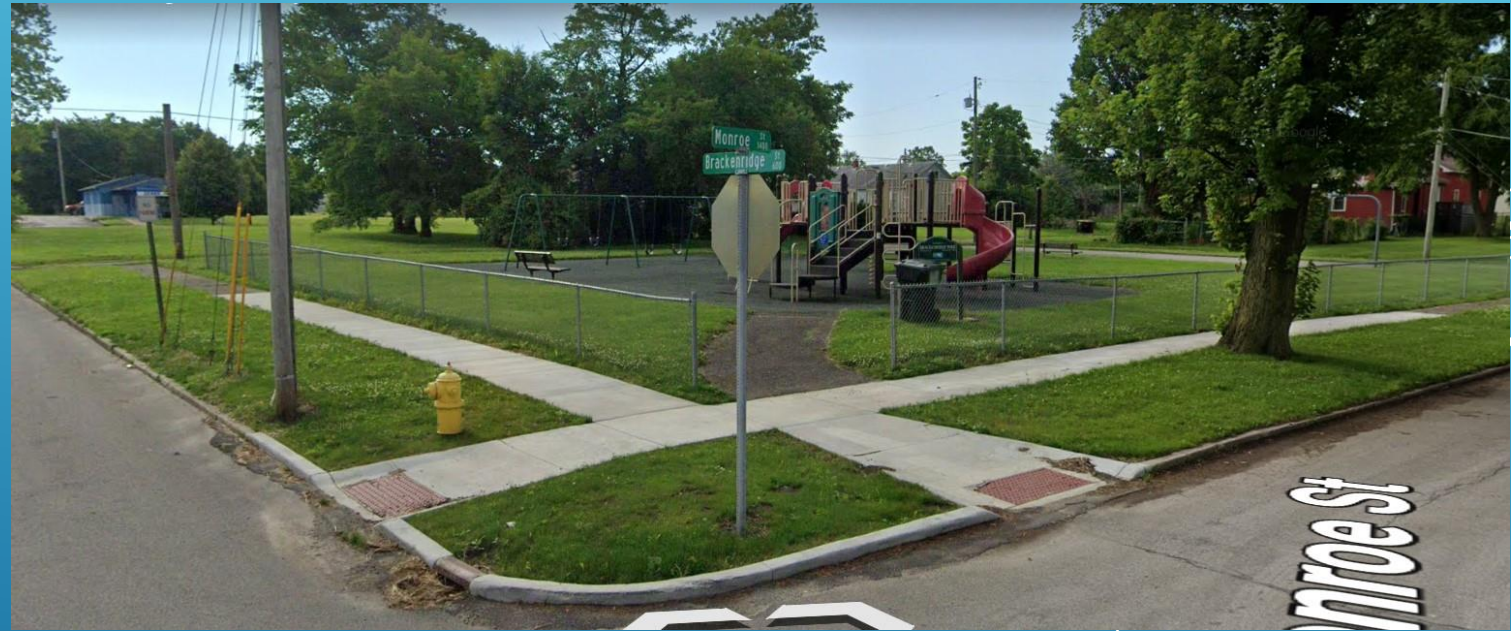
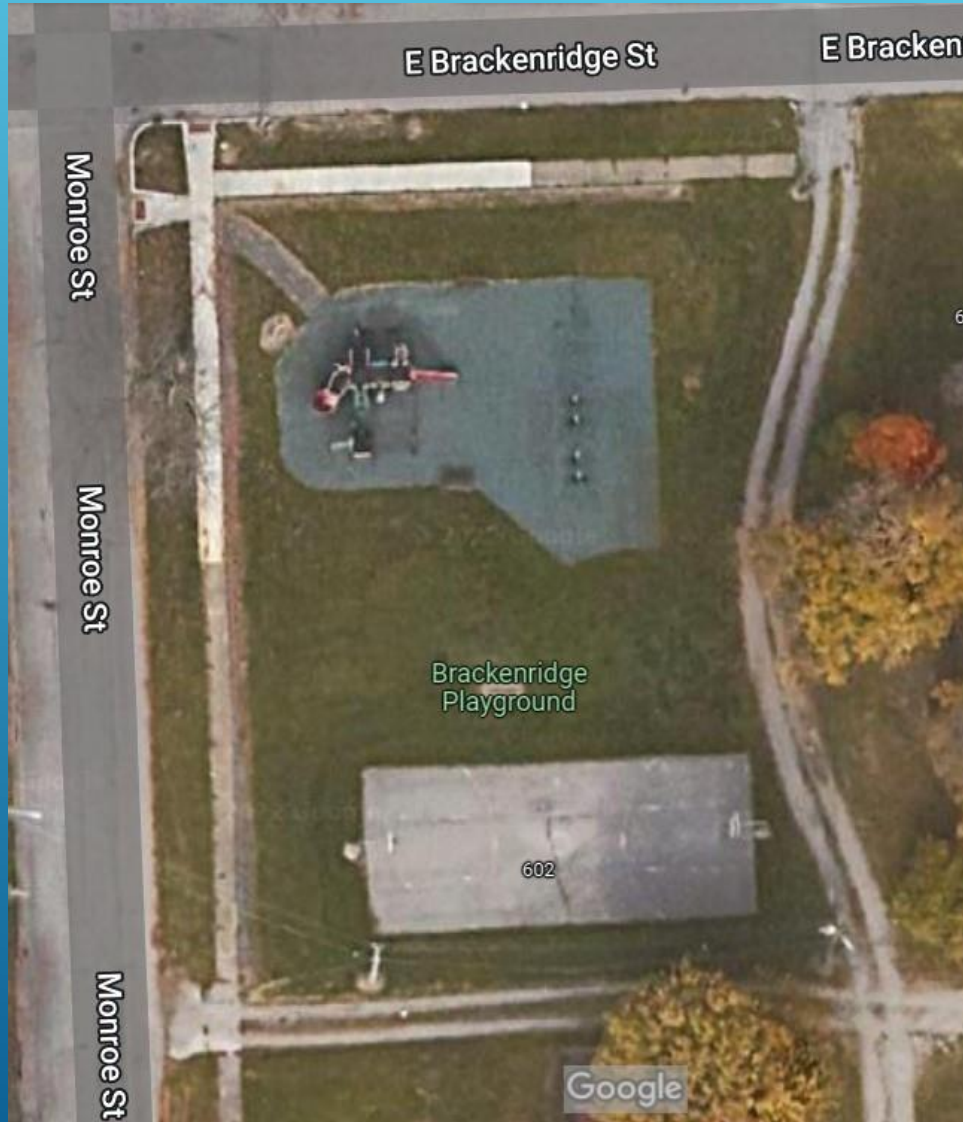
2022 FORT WAYNE PARKS MAP



BRACKENRIDGE PARK

Since 1970

Size in Acres: .38



BRACKENRIDGE PARK

History: The land for this park was purchased in May of 1968 from three separate property owners for the intention of the creation of a new park.

In September of 1969 Maxwell Tree Company furnished and planted two lovely maple trees that added to the beauty and shade of this pocket park. In November of 1969 Harold (Mick) McMillen donated two complete basketball backstops for the park. Lights were added to the basketball court in October of 1969. A fence on the north and west sides of the park was added in July of 1971 along with play ground equipment and a hard surface area for the basketball courts.

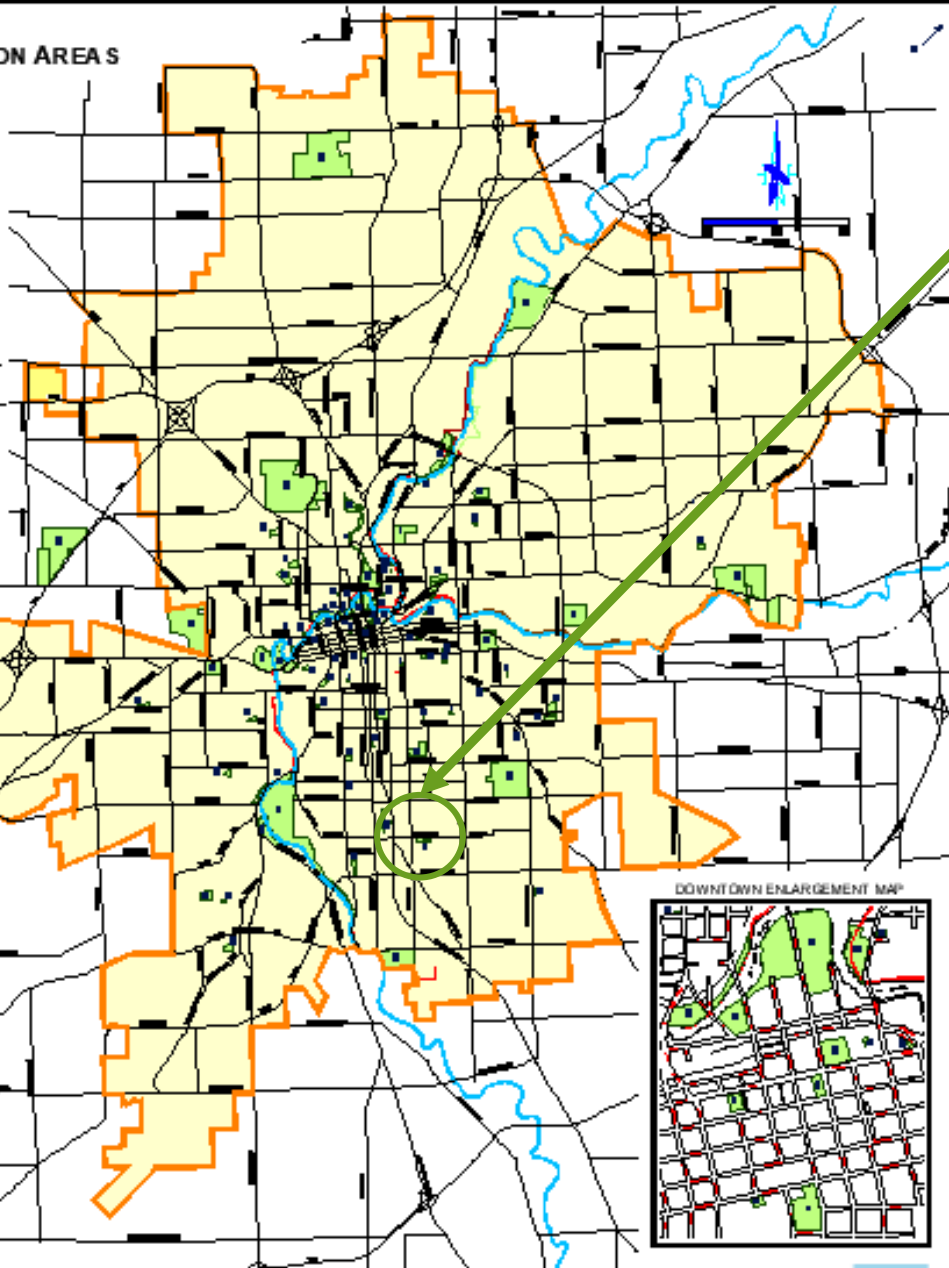
Brackenridge features a playset with multiple slides and other amenities as well as a swing set. A basketball court is available for use at the south edge of the park



CITY OF FORT WAYNE
PARKS AND RECREATION AREAS

MAP LEGEND

1. Adams Park	11. Parkview Park
2. Alvin Park	12. Parkview Park
3. Anderson Park	13. Parkview Park
4. Anderson Park	14. Parkview Park
5. Anderson Park	15. Parkview Park
6. Anderson Park	16. Parkview Park
7. Anderson Park	17. Parkview Park
8. Anderson Park	18. Parkview Park
9. Anderson Park	19. Parkview Park
10. Anderson Park	20. Parkview Park
21. Parkview Park	31. Parkview Park
22. Parkview Park	32. Parkview Park
23. Parkview Park	33. Parkview Park
24. Parkview Park	34. Parkview Park
25. Parkview Park	35. Parkview Park
26. Parkview Park	36. Parkview Park
27. Parkview Park	37. Parkview Park
28. Parkview Park	38. Parkview Park
29. Parkview Park	39. Parkview Park
30. Parkview Park	40. Parkview Park



BREWER PARK

800 E. Pettit Ave.



2022 FORT WAYNE PARKS MAP



BREWER PARK

Since 1954

Size in Acres: 5.1



• BREWER PARK

History: Brewer Park was deeded to the city by the Township trustees in 1953 with the intention of the land being used for recreational and leisure activities. The park serves as mostly an open space available for people to for various outdoor activities.

Today, in addition to an expansive lawn area, the park has a basketball court, a playground area with swing-sets, benches for seating, and picnic spots.



BREWER PARK – FUTURE PLANS

Most recently, this park has been the focus of attention by the residents of the neighborhoods in the area because of an exciting new plan that has been developed by the Parks Department. This is the new Brewer Park Master Plan. The Parks and Recreation Department is currently working with organized groups from the neighborhood to help raise funds for this ambitious project.

When complete, this new plan will add many new improvements to the park, including: a new pavilion with restrooms, a splashpad, a drinking fountain, a multi-purpose sport field, and an asphalt walking path around the park.



BREWER PARK REDEVELOPMENT

FORT WAYNE, INDIANA

FEBRUARY 17, 2020

RESTROOMS	DRINKING FOUNTAIN
PAVILION	BENCHES/TABLES
SPLASHPAD	ALL AGES
WALKING PATH	BEAUTY
SHADE	CULTURE



MUCH MORE TO COME...

