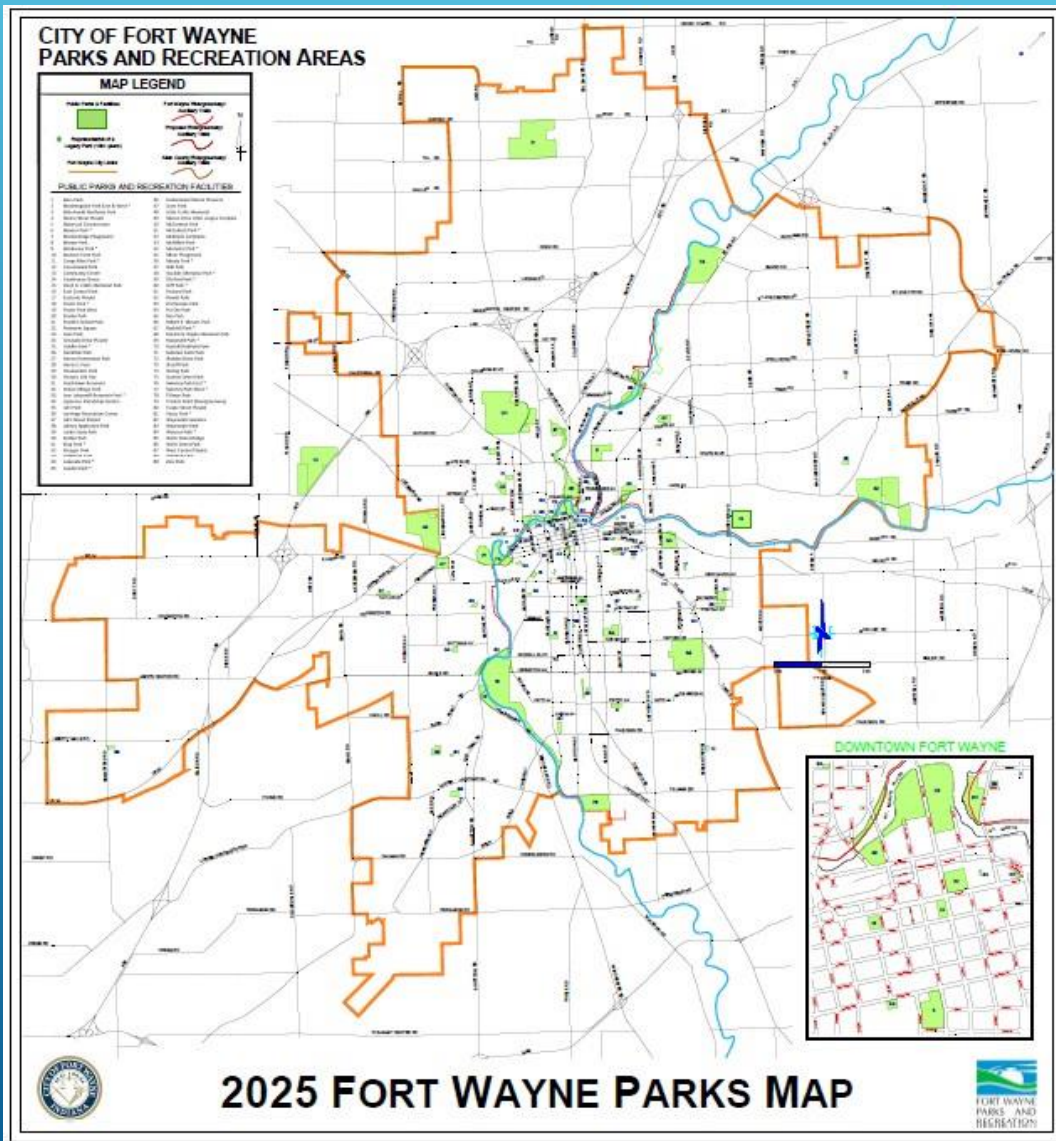


FORT WAYNE BOARD OF PARK COMMISSIONERS

Parks History and Highlights:

- Roosevelt Park
- Wells Street Park
- Vesey Park



CITY OF FORT WAYNE PARKS AND RECREATION AREAS

MAP LEGEND

Public Parks & Recreation

Public Parks & Recreation

Public Parks & Recreation

Public Parks & Recreation

Public Parks & Recreation

Public Parks & Recreation

Public Parks & Recreation

Public Parks & Recreation

Public Parks & Recreation

Public Parks & Recreation

Public Parks & Recreation

Public Parks & Recreation

Public Parks & Recreation

Public Parks & Recreation

Public Parks & Recreation

Public Parks & Recreation

Public Parks & Recreation

Public Parks & Recreation

Public Parks & Recreation

Public Parks & Recreation

Public Parks & Recreation

Public Parks & Recreation

Public Parks & Recreation

Public Parks & Recreation

Public Parks & Recreation

Public Parks & Recreation

Public Parks & Recreation

Public Parks & Recreation

Public Parks & Recreation

Public Parks & Recreation

Public Parks & Recreation

Public Parks & Recreation

Public Parks & Recreation

Public Parks & Recreation

Public Parks & Recreation

Public Parks & Recreation

Public Parks & Recreation

Public Parks & Recreation

Public Parks & Recreation

Public Parks & Recreation

Public Parks & Recreation

Public Parks & Recreation

Public Parks & Recreation

Public Parks & Recreation

Public Parks & Recreation

Public Parks & Recreation

Public Parks & Recreation

Public Parks & Recreation

Public Parks & Recreation

Public Parks & Recreation

Public Parks & Recreation

Public Parks & Recreation

Public Parks & Recreation

Public Parks & Recreation

Public Parks & Recreation

Public Parks & Recreation

Public Parks & Recreation

Public Parks & Recreation

Public Parks & Recreation

Public Parks & Recreation

Public Parks & Recreation

Public Parks & Recreation

Public Parks & Recreation

Public Parks & Recreation

Public Parks & Recreation

Public Parks & Recreation

Public Parks & Recreation

Public Parks & Recreation

Public Parks & Recreation

Public Parks & Recreation

Public Parks & Recreation

Public Parks & Recreation

Public Parks & Recreation

Public Parks & Recreation

Public Parks & Recreation

Public Parks & Recreation

Public Parks & Recreation

Public Parks & Recreation

Public Parks & Recreation

Public Parks & Recreation

Public Parks & Recreation

Public Parks & Recreation

Public Parks & Recreation

Public Parks & Recreation

Public Parks & Recreation

Public Parks & Recreation

Public Parks & Recreation

Public Parks & Recreation

Public Parks & Recreation

Public Parks & Recreation

Public Parks & Recreation

Public Parks & Recreation

Public Parks & Recreation

Public Parks & Recreation

Public Parks & Recreation

Public Parks & Recreation

Public Parks & Recreation

Public Parks & Recreation

Public Parks & Recreation

Public Parks & Recreation

Public Parks & Recreation

Public Parks & Recreation

Public Parks & Recreation

Public Parks & Recreation

Public Parks & Recreation

Public Parks & Recreation

Public Parks & Recreation

Public Parks & Recreation

Public Parks & Recreation

Public Parks & Recreation

Public Parks & Recreation

Public Parks & Recreation

Public Parks & Recreation

Public Parks & Recreation

Public Parks & Recreation

Public Parks & Recreation

Public Parks & Recreation

Public Parks & Recreation

Public Parks & Recreation

Public Parks & Recreation

Public Parks & Recreation

Public Parks & Recreation

Public Parks & Recreation

Public Parks & Recreation

Public Parks & Recreation

Public Parks & Recreation

Public Parks & Recreation

Public Parks & Recreation

Public Parks & Recreation

Public Parks & Recreation

Public Parks & Recreation

Public Parks & Recreation

Public Parks & Recreation

Public Parks & Recreation

Public Parks & Recreation

Public Parks & Recreation

Public Parks & Recreation

Public Parks & Recreation

Public Parks & Recreation

Public Parks & Recreation

Public Parks & Recreation

Public Parks & Recreation

Public Parks & Recreation

Public Parks & Recreation

Public Parks & Recreation

Public Parks & Recreation

Public Parks & Recreation

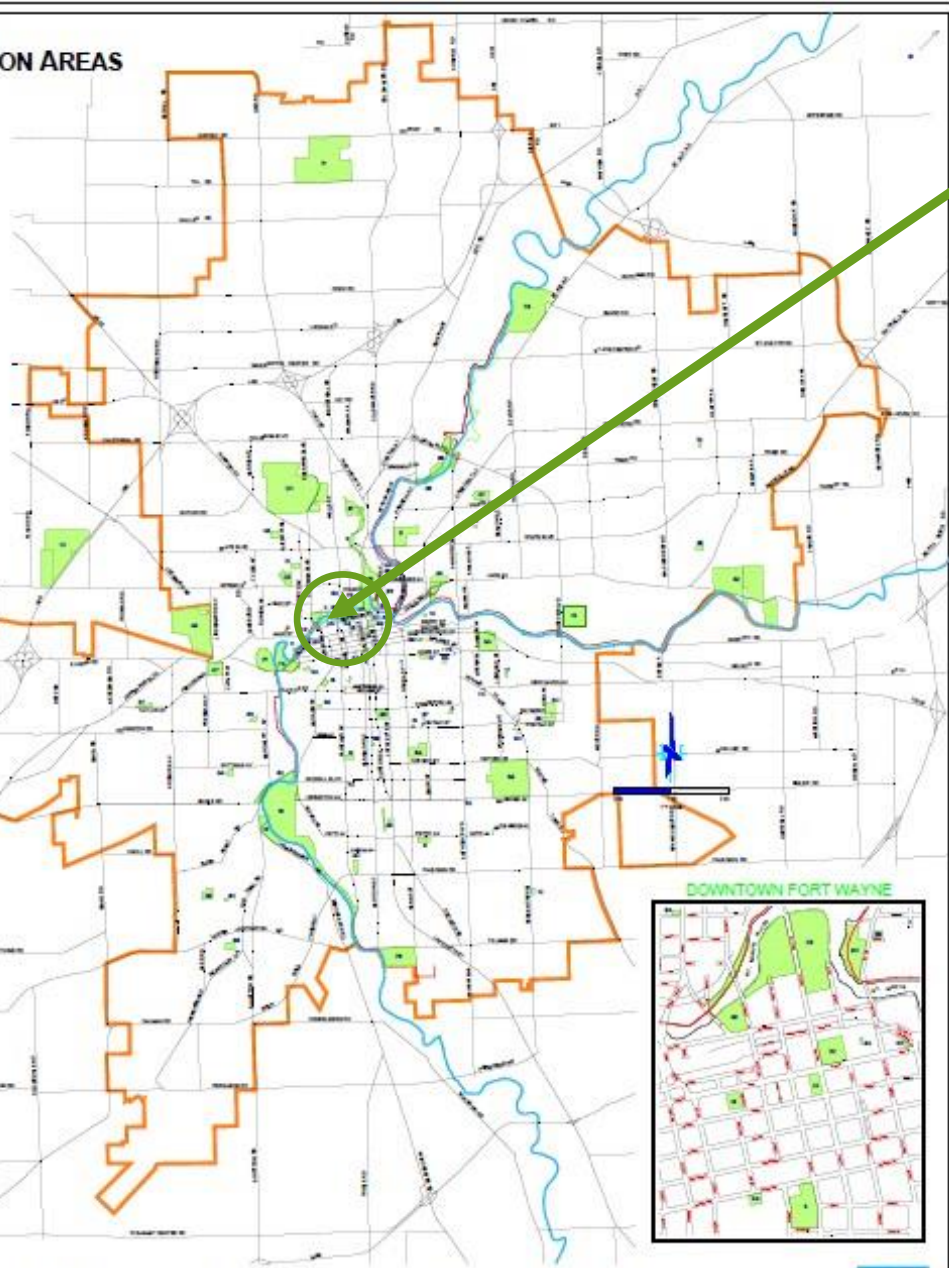
Public Parks & Recreation

Public Parks & Recreation

Public Parks & Recreation

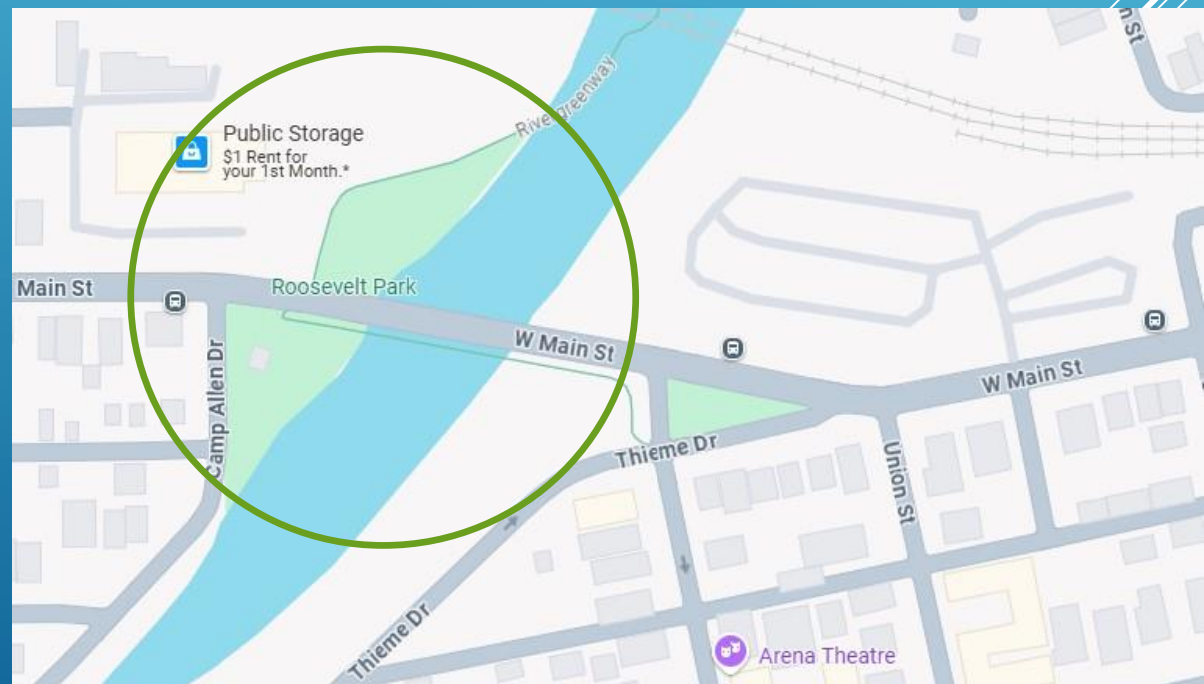
Public Parks & Recreation

Public Parks & Recreation



2025 FORT WAYNE PARKS MAP

ROOSEVELT PARK
Located at 1135 W. Main St.



ROOSEVELT PARK

Since 1919

Size in Acres: 1.5

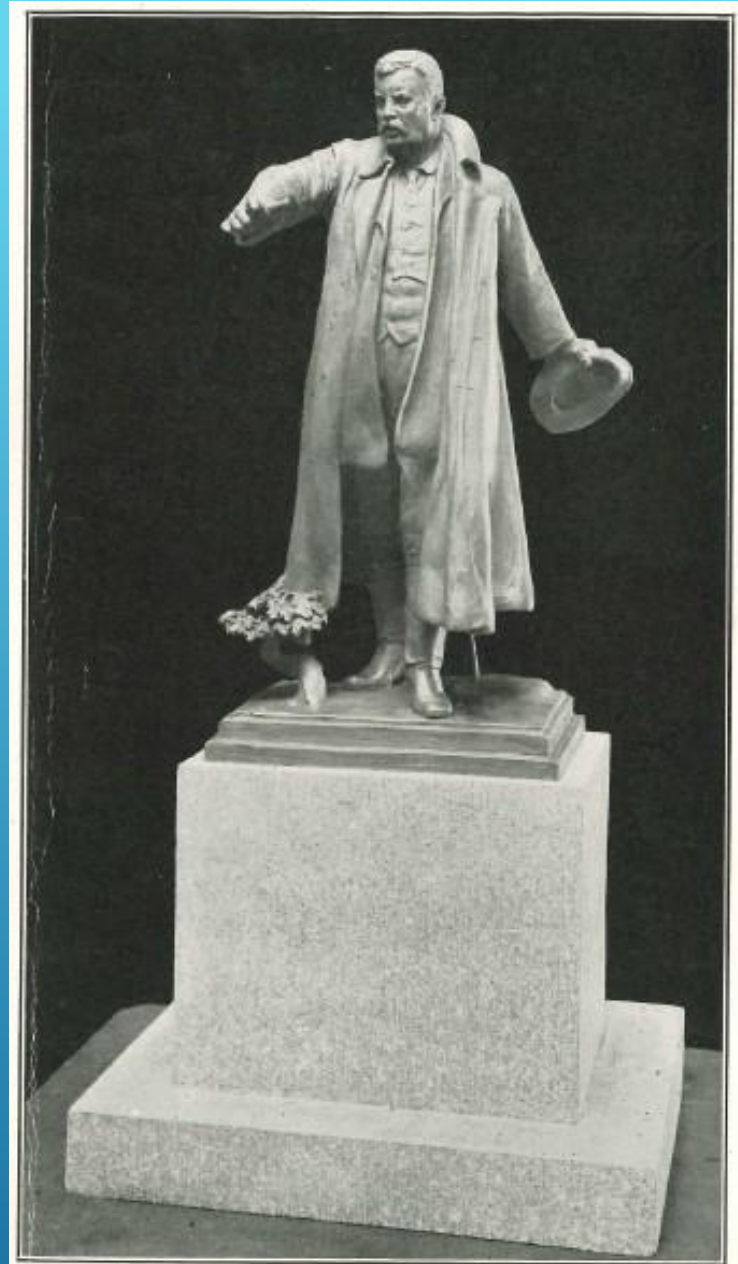
Roosevelt Park is located east of the intersection of Main Street and Camp Allen Drive next to the St. Mary's River. It has rivergreenway access and is only a short distance away from **Orff Park**



ROOSEVELT PARK

History

The park property was acquired in 1919 and the people in that area at the time desired the park be called Theodore Roosevelt Park. A movement was then started to secure funds from which to erect within the park a memorial to Mr. Roosevelt who was our 26th President and has been ranked by scholars as one of the greatest US Presidents. Renowned sculptor Frederick C. Hibbard from Chicago created a model of the proposed statue but the project was never completed.



Model of a Proposed Statue of Theodore Roosevelt, by Frederick C. Hibbard, the Widely Known Chicago Sculptor, to be Erected in Roosevelt Park. Mr. Roosevelt is shown Addressing His Fellow Citizens at the Outbreak of the World War.

ROOSEVELT PARK TODAY

The main feature of this park is the Rivergreenway path. The path passes through the park along the Saint Marys River stretching between West Main Street and the Norfolk & Southern Railroad. The park is a small, secluded area with flowering trees and mowed grass areas creating a tranquil setting for both trail and park users.



MAP LEGEND

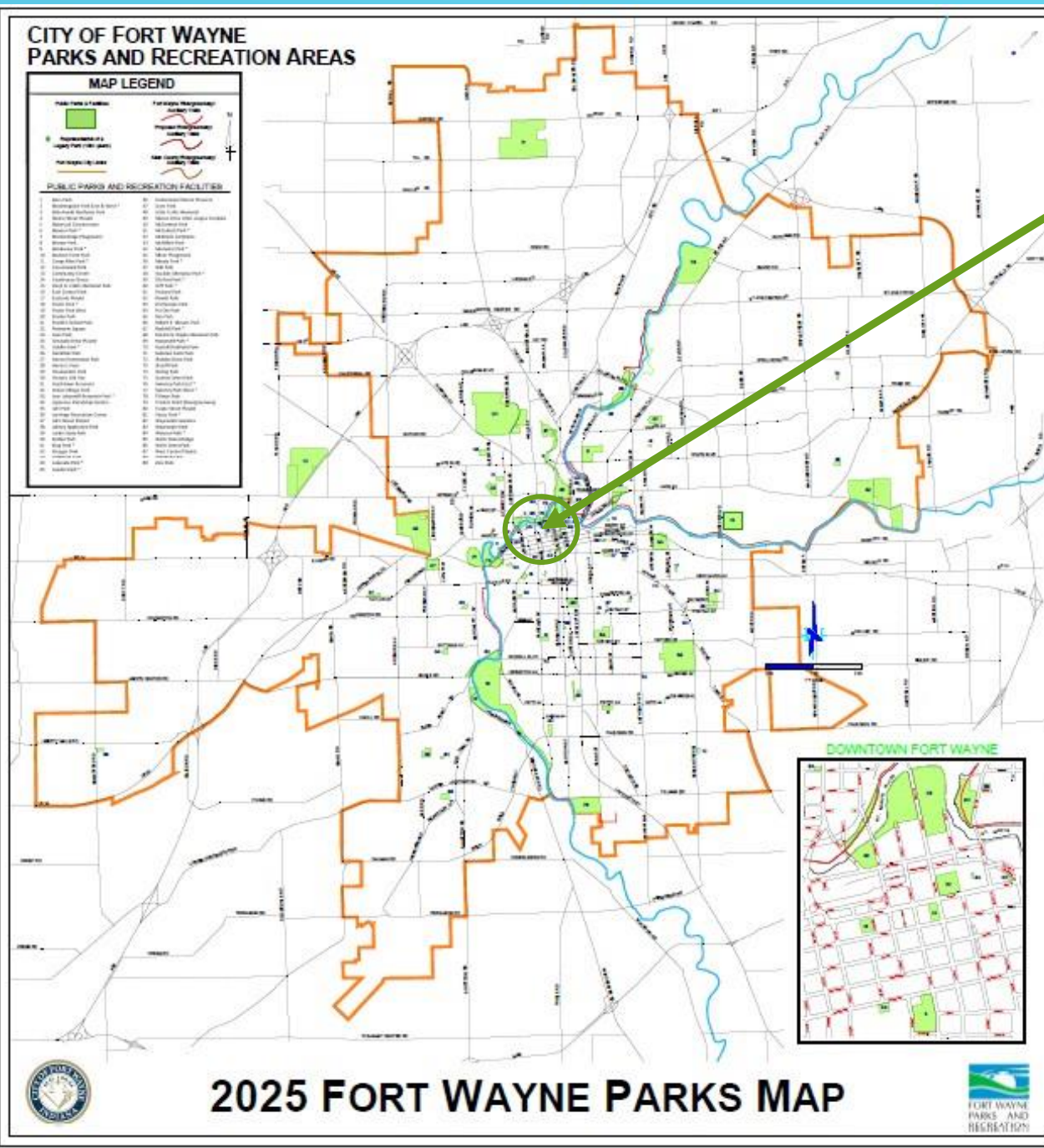
Public Parks & Recreation Facilities

Legend:

- Public Parks & Recreation Facilities
- Proposed Public Parks & Recreation Facilities
- Major Regional Freeways

Facilities:

1. San Diego State University
2. San Diego State University
3. San Diego State University
4. San Diego State University
5. San Diego State University
6. San Diego State University
7. San Diego State University
8. San Diego State University
9. San Diego State University
10. San Diego State University
11. San Diego State University
12. San Diego State University
13. San Diego State University
14. San Diego State University
15. San Diego State University
16. San Diego State University
17. San Diego State University
18. San Diego State University
19. San Diego State University
20. San Diego State University
21. San Diego State University
22. San Diego State University
23. San Diego State University
24. San Diego State University
25. San Diego State University



Located at 1401 Wells Streets at the intersection of Wells and Third Streets

WELLS STREET PARK

Since 1976

Size in Acres: 0.11

The park is a small corner lot consisting of just .11 acres, situated on the northwest corner of Wells and Third Streets. The land was donated to the City in 1976 by the Fort Wayne Fire Department.



WELLS STREET PARK HISTORY

The Wells Street Park was once home to Fort Wayne Fire Station #6. From 1893 until 1968 a two-story brick firehouse operated on this site facing Wells Street and served the Bloomingdale community. When Station No. 6 closed, it was considered as a location for a new fire museum, but the neighborhood lobbied for it to be torn down to make space for a park. In 1975 they got their wish and the building was demolished to create the park.



Fort Wayne Fire Station No. 6, 1401 Wells Street. Date ca.1895.



Demolition of Fort Wayne Fire Station No. 6, 1401 Wells Street. Station was built in 1893. Date: 05/06/1975.

WELLS STREET PARK TODAY

This park is in an area of natural open space at the intersection of Wells and Third Streets. It offers a small but pleasant respite to the neighborhood for watching traffic while enjoying the corner park bench or just passing through.

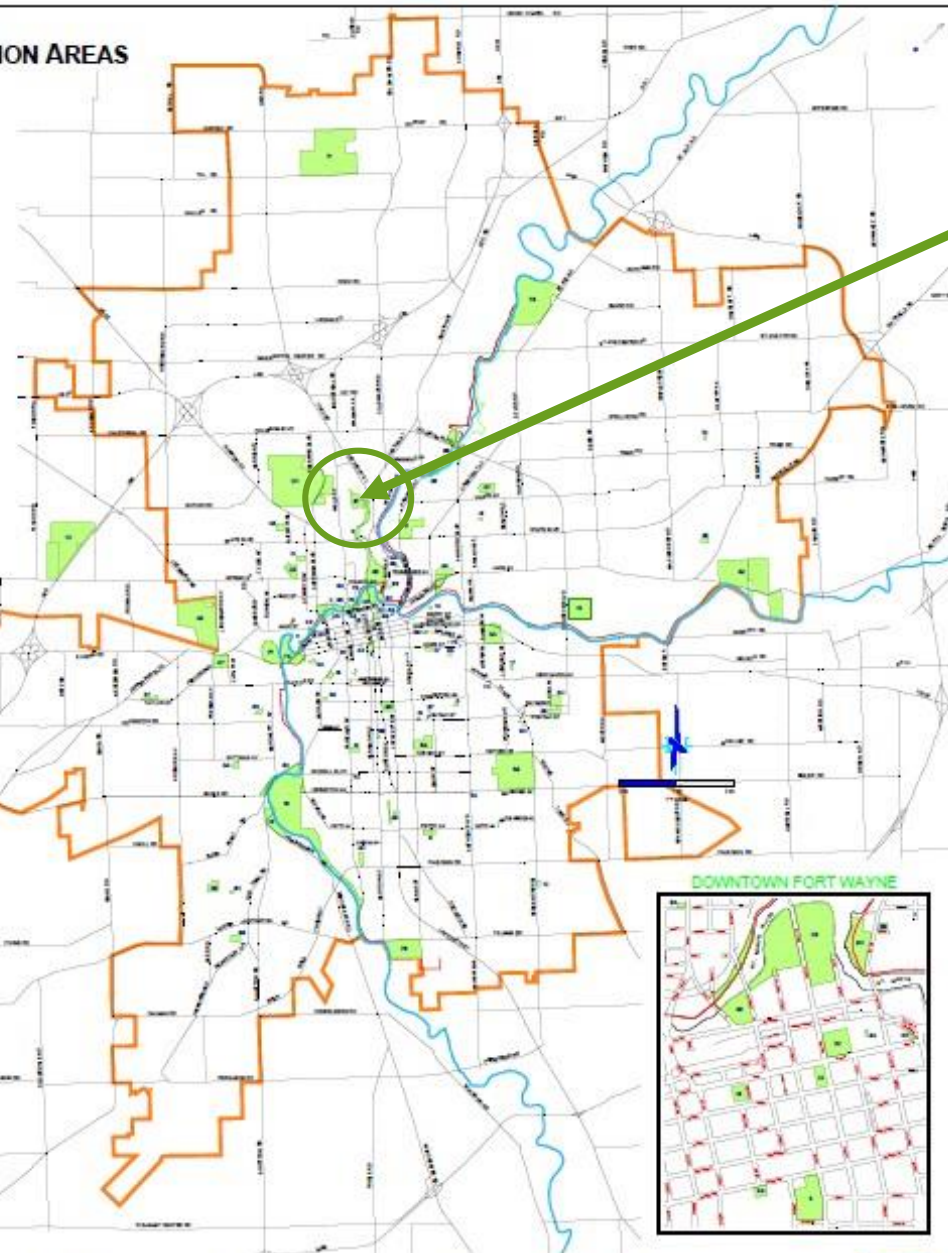


CITY OF FORT WAYNE PARKS AND RECREATION AREAS

MAP LEGEND

- Park Type Legend
- Public Park (Green)
- Private Park (Yellow)
- Parkway (Orange)

- ### PUBLIC PARKS AND RECREATION FACILITIES
- | | |
|----------------|-------------------|
| 1. Adams Park | 21. Veterans Park |
| 2. Adams Park | 22. Veterans Park |
| 3. Adams Park | 23. Veterans Park |
| 4. Adams Park | 24. Veterans Park |
| 5. Adams Park | 25. Veterans Park |
| 6. Adams Park | 26. Veterans Park |
| 7. Adams Park | 27. Veterans Park |
| 8. Adams Park | 28. Veterans Park |
| 9. Adams Park | 29. Veterans Park |
| 10. Adams Park | 30. Veterans Park |
| 11. Adams Park | 31. Veterans Park |
| 12. Adams Park | 32. Veterans Park |
| 13. Adams Park | 33. Veterans Park |
| 14. Adams Park | 34. Veterans Park |
| 15. Adams Park | 35. Veterans Park |
| 16. Adams Park | 36. Veterans Park |
| 17. Adams Park | 37. Veterans Park |
| 18. Adams Park | 38. Veterans Park |
| 19. Adams Park | 39. Veterans Park |
| 20. Adams Park | 40. Veterans Park |

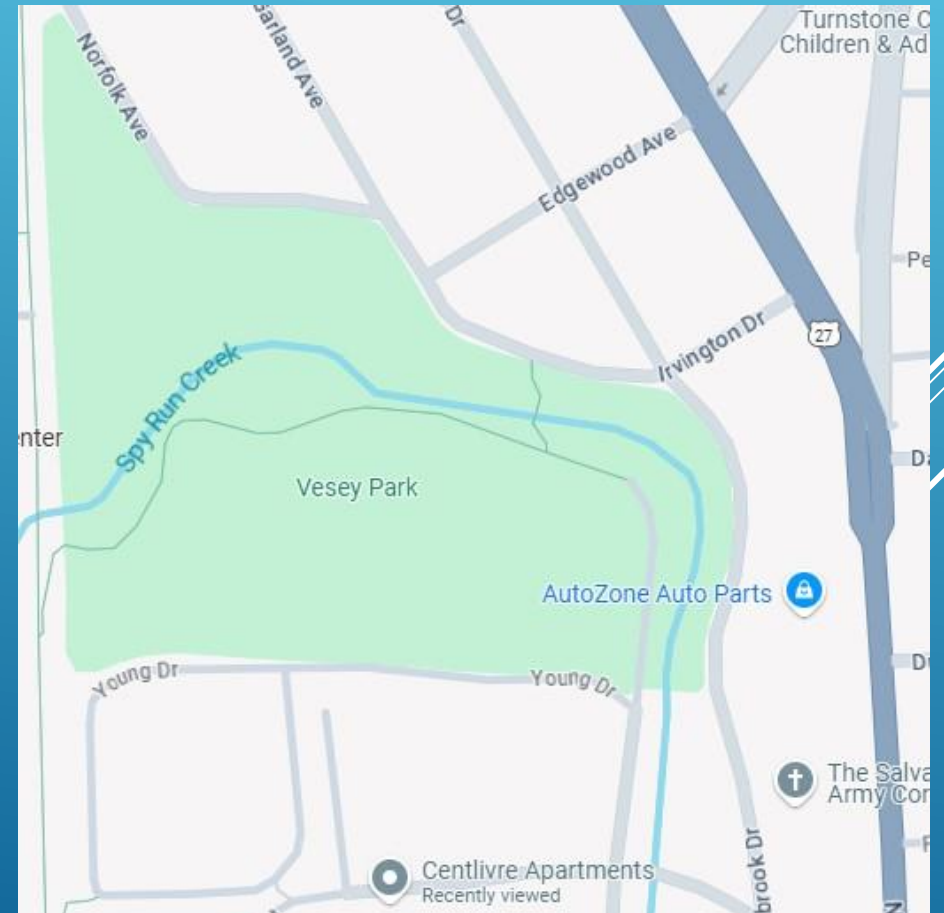


2025 FORT WAYNE PARKS MAP



VESEY PARK

located at Irvington and Eastbrook Drive



VESEY PARK

Since 1912

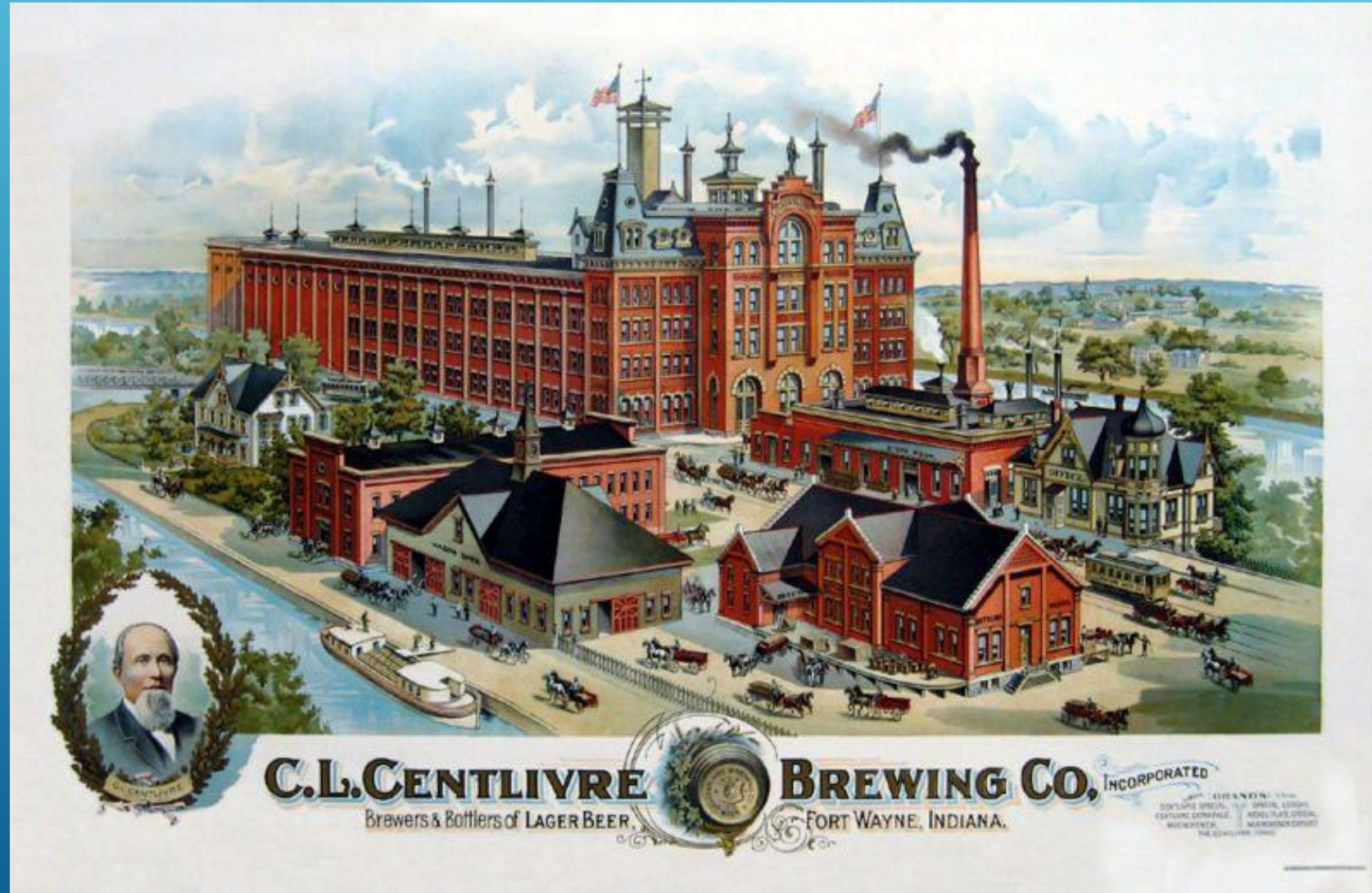
Size in Acres: 15.4

In 1912, the John H. Vesey Estate donated eight acres of land to the Board of Park Commissioners for the purposes of creating a park. The rest of the site was held in a trust until the Commissioners agreed to purchase it three years later to bring the park up to it's current 15.4 acres.



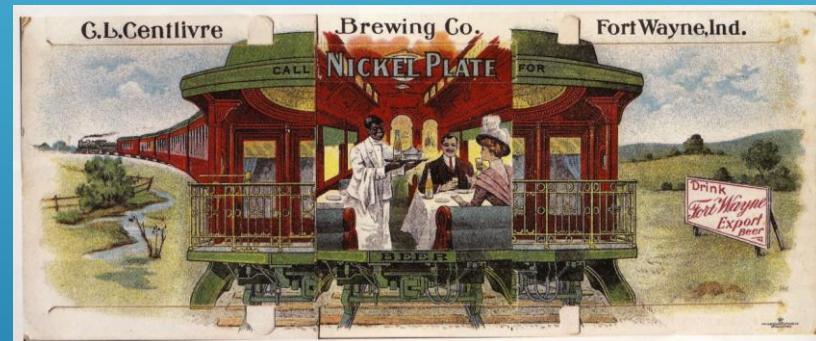
VESEY PARK HISTORY

The land associated with Vesey Park has a rich and diverse history associated with the former C.L. Centlivre Brewing Company, which was located a block away along the Saint Marys River. The company operated from 1862 until its closing in 1970.



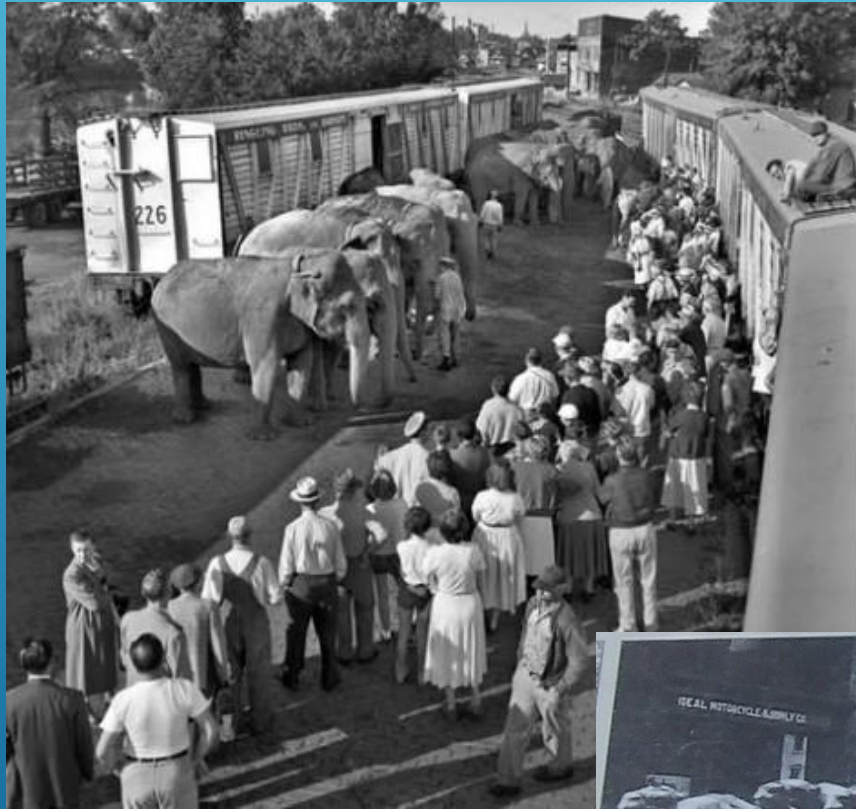
VESEY PARK HISTORY

In 1862, the C.L. Centlivre Brewing Company, originally named *The French Brewery* began operations along the St. Joseph River under the ownership of Mr. Charles Lewis Centlivre. The property just south of the current park was also owned by the company. It was on this site that Mr. Centlivre created a park where families could gather for picnics, musical performances, and sporting events, as well as drink a little beer in the beer garden. There was also a street-car line that connected visitors from the city-center to the park. The line was used as transportation for the company's finished beer to the Nickel Plate Railroad Station and the dozens of downtown saloons.



VESEY PARK HISTORY

The park would later serve as the city's circus grounds for many years. Circus groups from all over the country used the site, including the famous Ringling Brothers Circuses. The park also included a half-mile track, grand stand, refreshment booth, ice houses, and a stage. The track was used for horse racing and as a horse riding academy. Later, in the 1910's and 1920's, the track hosted auto races.



VESEY PARK TODAY

The park today serves as a beautiful experience in nature, with a walking path stretching along the Spy Run Creek, connecting to the Rivergreenway. It is considered one of the city's trail-head locations with nine parking spaces available for trail users to off-load their vehicles and use the trail. The park also contains acres of open space for picnicking, or field activities.



MUCH MORE TO COME...

